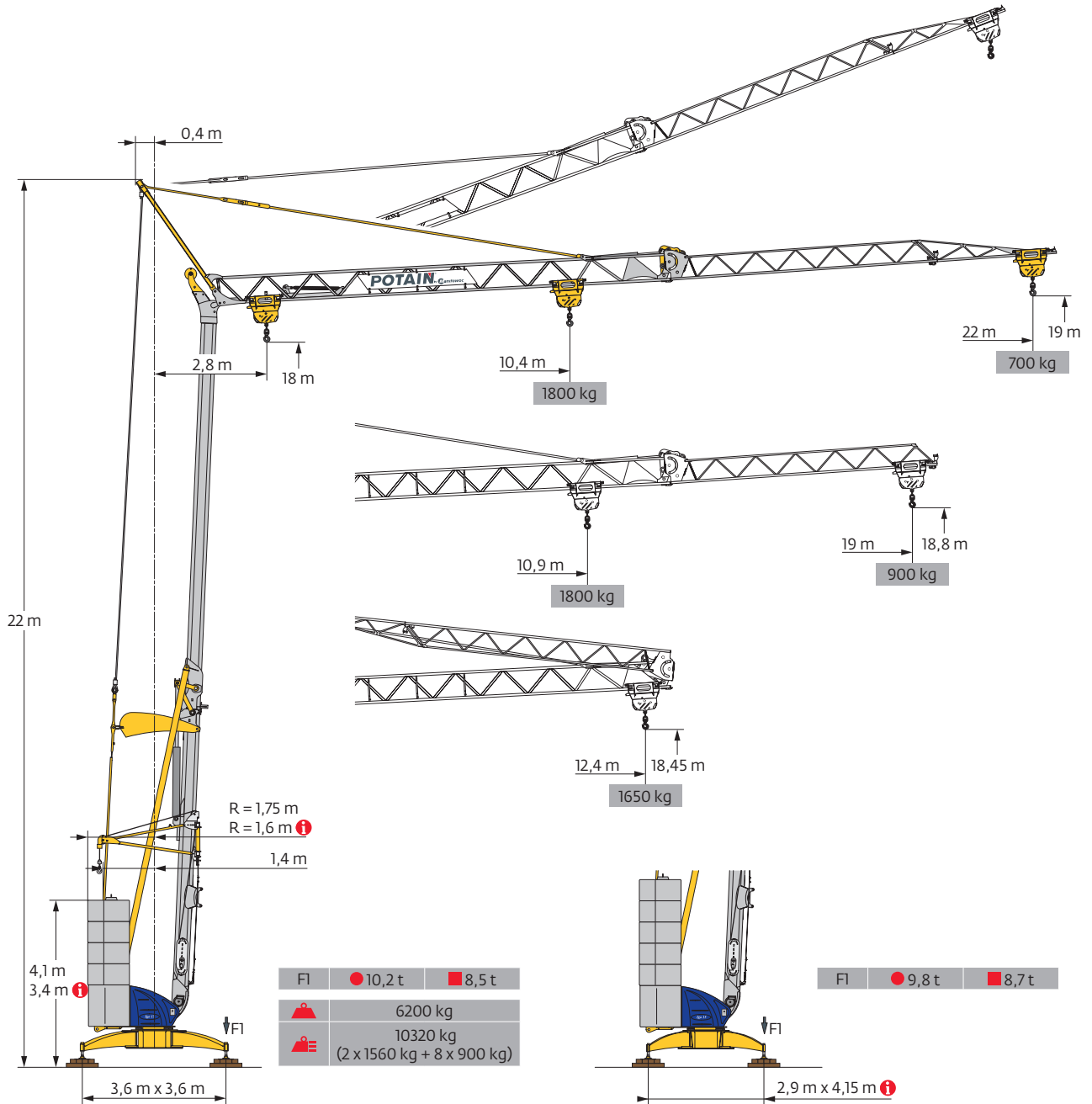
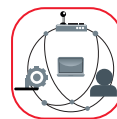


## Igo 15



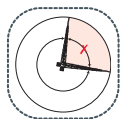
SmartCom



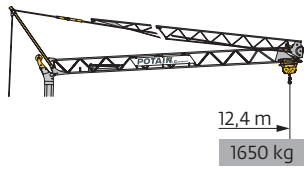
Hydraulic  
Levelling



Top Zone



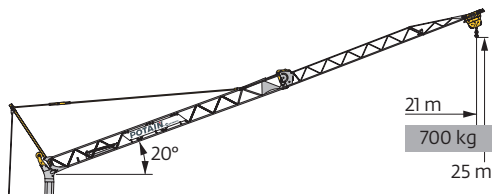
Courbes de charges / Lastkurven / Load curves / Curvas de cargas / Curve di carico  
 Curvas de carga / Кривые нагрузок



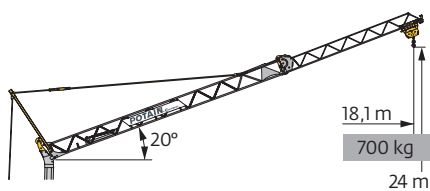
|      |     |   |      |      |    |
|------|-----|---|------|------|----|
| 22 m | 2,8 | ▶ | 11,6 | 12,4 | m  |
| ▲▲▲  | ■   |   | 1800 | 1650 | kg |
| 19 m | 2,8 | ▶ | 11,6 | 12,4 | m  |
| ▲▲▲  | ■   |   | 1800 | 1650 | kg |



|     |   |      |      |      |      |      |      |      |      |     |     |     |     |     |    |
|-----|---|------|------|------|------|------|------|------|------|-----|-----|-----|-----|-----|----|
| 2,8 | ▶ | 10,4 | 11   | 12   | 13   | 14   | 15   | 16   | 17   | 18  | 19  | 20  | 21  | 22  | m  |
|     |   | 1800 | 1680 | 1505 | 1360 | 1240 | 1135 | 1045 | 970  | 905 | 845 | 790 | 745 | 700 | kg |
| 2,8 | ▶ | 10,9 | 11   | 12   | 13   | 14   | 15   | 16   | 17   | 18  | 19  |     |     |     | m  |
|     |   | 1800 | 1780 | 1595 | 1445 | 1315 | 1210 | 1115 | 1035 | 965 | 900 |     |     |     | kg |







|      |     |   |  |  |  |  |  |  |  |  |  |  |     |    |
|------|-----|---|--|--|--|--|--|--|--|--|--|--|-----|----|
| 22 m | 2,8 | ▶ |  |  |  |  |  |  |  |  |  |  | 21  | m  |
| ▲▲▲  | ■   |   |  |  |  |  |  |  |  |  |  |  | 700 | kg |



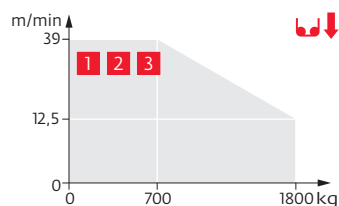
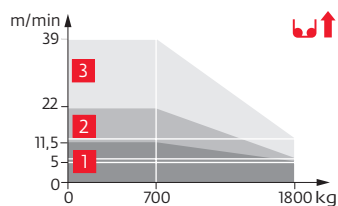
|      |     |   |  |  |  |  |  |  |  |  |      |    |
|------|-----|---|--|--|--|--|--|--|--|--|------|----|
| 19 m | 2,8 | ▶ |  |  |  |  |  |  |  |  | 18,1 | m  |
| ▲▲▲  | ■   |   |  |  |  |  |  |  |  |  | 700  | kg |

Mécanismes / Triebwerke / Mechanisms / Mecanismos / Meccanismi  
Mecanismos / Механизмы

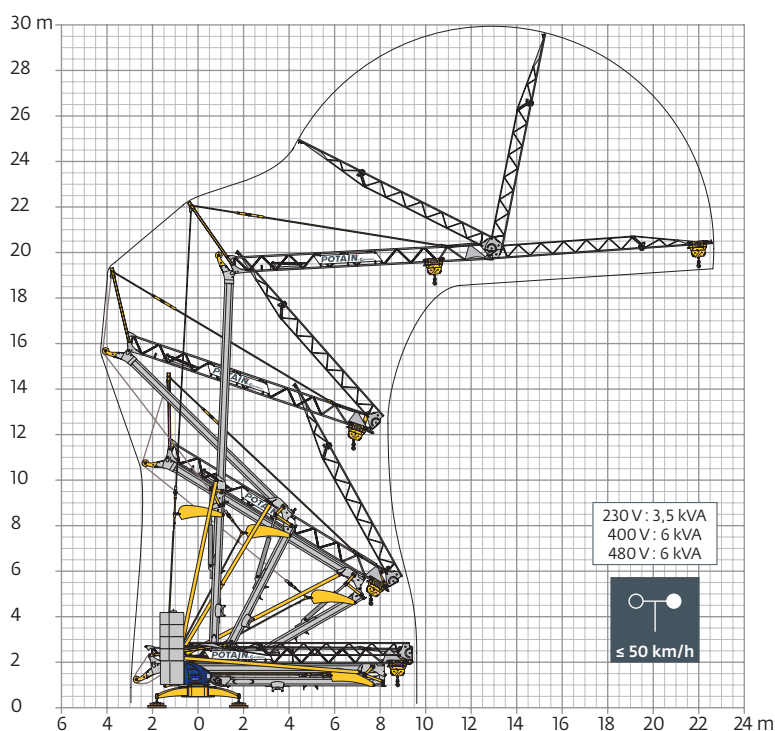
| 230 V - 50 Hz<br>400 V - 50 Hz<br>480 V - 60 Hz                                   |                       |                |                        |  |                   |                   | ch - PS<br>hp   | kW              |     |     |
|---|-----------------------|----------------|------------------------|---|-------------------|-------------------|-----------------|-----------------|-----|-----|
|  | <b>8 LVF 9 Optima</b> | 230 V $\neq$   | m/min                  | $\updownarrow$ 3,5  | $\uparrow$ 5      | $\downarrow$ 12,5 | $\uparrow$ 11,5 | $\downarrow$ 39 | 3,3 | 2,4 |
|   |                       | 20 A <b>1</b>  | kg                     | 1800  | 1800              | 700               |                 |                 |     |     |
|   |                       | 230 V $\neq$   | m/min                  | $\updownarrow$ 3,5  | $\uparrow$ 6,5    | $\downarrow$ 12,5 | $\uparrow$ 22   | $\downarrow$ 39 | 5,2 | 3,8 |
|   |                       | 32 A <b>2</b>  | kg                     | 1800  | 1800              | 700               |                 |                 |     |     |
|   |                       | 400 V          | m/min                  | $\updownarrow$ 3,5  | $\downarrow$ 12,5 | $\downarrow$ 39   |                 |                 | 7,5 | 5,5 |
|   |                       | 480 V <b>3</b> | kg                     | 1800  | 1800              | 700               |                 |                 |     |     |
|  | <b>1 DVF 4</b>        |                | m/min                  | 14 - 28   |                   |                   |                 |                 | 1,5 | 1,1 |
|  | <b>RVF 20</b>         |                | tr/min<br>U/min<br>rpm | 0 → 1   |                   |                   |                 |                 | 1,5 | 1,1 |

|  IEC 60204-32 |  kVA |
|--|---|
| 230 V (+10% -10%) 50 Hz<br>400 V (+10% -10%) 50 Hz<br>480 V (+6% -10%) 60 Hz                   | 230 V 20 A : 4,6 kVA<br>230 V 32 A : 7,4 kVA<br>400 V / 480 V : 11 kVA                  |

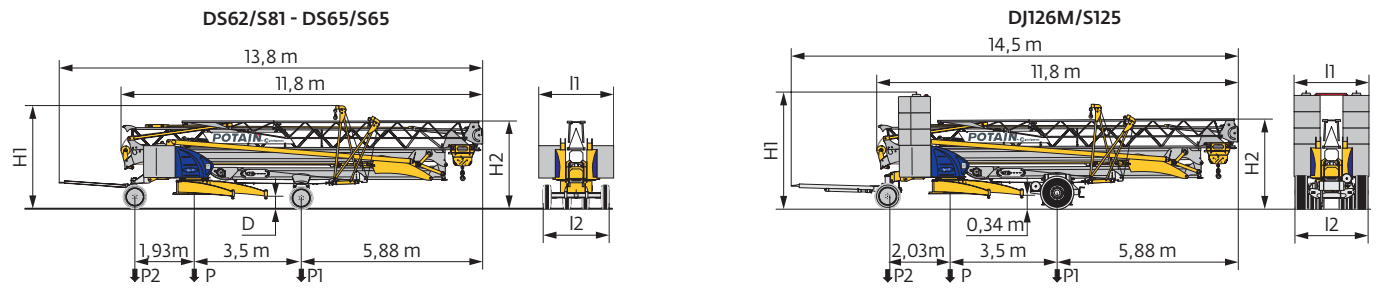
8 LVF 9 Optima



Montage / Montage / Erection / Montaje / Montaggio  
Montagem / Монтаж

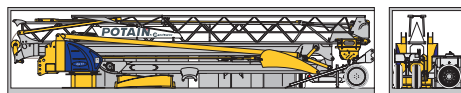


Transport / Transport / Transport / Transporte / Trasporto  
Transporte / Транспортировка



|               | km/h | D (m)     | H1 (m)    | H2 (m)    | l1 (m)   | l2 (m) | P (kg)  | P1 (kg) | P2 (kg) |
|---------------|------|-----------|-----------|-----------|----------|--------|---------|---------|---------|
| DS62/S81      | 10   | 0,33/0,18 | 3,41/3,26 | 2,98/2,83 | 2,48/2,2 | 2,2    | 9900    | 5700    | 4200    |
| DS65/S65      | 25   | 0,33/0,18 | 3,41/3,26 | 2,98/2,83 | 2,48/2,2 | 2      | 10210   | 5820    | 4390    |
| ..... / ..... |      |           |           |           |          |        |         |         |         |
|               | km/h | H1 (m)    | H2 (m)    | l1 (m)    | l2 (m)   | P (kg) | P1 (kg) | P2 (kg) |         |
| DJ126M/S125   | 25   | 3,76      | 3         | 2,48/2,2  | 2,4      | 16400  | 7400    | 9000    |         |
| ..... / ..... |      |           |           |           |          |        |         |         |         |

Conteneur High Cube 40' / Container High Cube 40' / Conteneur High Cube 40' / Contenedor High Cube 40'  
Container High Cube 40' / Contentor High Cube 40' / 40-футовый контейнер повышенной вместимости High Cube



|  | FR  | DE  | EN  | ES   | IT  | PT   | RU   |
|--|---|---|---|--|---|--|--|
|  | Rayon de giration   | Schwenk radius  | Rear slewing radius   | Radio de giro  | Raggio di rotazione   | Raio de rotação  | Задний габарит   |
|  | Nous consulter  | Auf Anfrage   | Consult us  | Consultarnos   | Consultateci  | Consultar-nos  | Проконсультируйтесь у нас  |
|  | Réactions en service  | Reaktionskräfte in Betrieb  | Reactions in service  | Reacciones en servicio   | Reazioni in servizio  | Reacções em serviço  | Реакция при работе   |
|  | Réactions hors service  | Reaktionskräfte außer Betrieb   | Reactions out of service  | Reacciones fuera de servicio   | Reazioni fuori servizio   | Reacções fora de serviço   | Реакция в покое  |
|  | Poids à vide, sans lest, sans trains de transport, avec flèche maxi. et hauteur standard. | Gewicht ohne Last, ohne Ballast, ohne Transportachsen, mit max. Auslager und Standardhöhe | Weight without load, without ballast, without transport axes, with max. jib and standard height | Peso en vacío, sin lastre, sin trenes de transporte con flecha y altura estandar | Peso a vuoto, senza zavorra, senza assali di trasporto, con braccio max e altezza standard. | Peso em vazio, sem lastro, sem eixos de transporte com lança máxima e altura standard. | Вес без груза, без балласта, без осей для транспортировки, с максимальным вылетом стрелы и стандартной высотой |
|  | Poids total du lest   | Ballast-Gesamtgewicht   | Total ballast weight  | Peso total del lastre  | Peso totale della zavorra   | Peso total do lastro   | Общий вес балласта   |
|  | Équipements standards   | Standardausrüstungen  | Standard equipment  | Equipamiento de serie  | Equipaggiamento standard  | Equipamento de série   | Стандартное оборудование   |
|  | Équipements optionnels  | Sonderausrüstungen  | Options   | Equipamiento opcional  | Equipaggiamento in opzione  | Equipamento opcional   | Дополнительное оборудование (опция)  |
|  | Levage  | Heben   | Hoisting  | Elevación  | Sollevamento  | Elevação   | Подъем   |
|  | Distribution  | Katzfahren  | Trolleying  | Distribución   | Distribuzione   | Distribuição   | Перемещение по стреле  |
|  | Orientation   | Schwenken   | Slewing   | Orientación  | Rotazione   | Rotação  | Поворот  |
|  | 50 Hz Monophasé   | 50 Hz Einphasige  | 50 Hz Single phase  | 50 Hz Monofásica   | 50 Hz Monofase  | 50 Hz monofásica   | Однофазное напряжение 50Hz   |
|  | Puissance requise   | Erforderliche Leistung  | Required power  | Potencia Necesaria   | Potenza richiesta   | Potência Necessária  | Потребляемая мощность  |
|  | Transport grue toute lestée.  | Krantransport mit voller Ballastierung.   | Transport of crane with full ballast.   | Transporte grúa completamente lastrada.  | Trasporto con gru completamente zavorrata.  | Transporte de grua totalmente balastrada.  | Перевозка крана с полным балластом   |
|  | Hauteurs sous crochet données moufle plaquéée   | Hakenhöhen werden mit plattiertem Haken angegeben   | Hook heights given with plated pulley block   | Altura bajo gancho con pasteca bloqueada   | Altezza sotto gancio con bozzello in contatto con carrello                                  | Altura ao gancho com o cadernal em contacto com o carrinho                             | Высота под крюком дана при условии, что крюковая подвеска соприкасается с кареткой                             |
|  | Document commercial non contractuel   | Unverbindliches Vertriebsdokument   | This commercial document is not legally binding   | Documento comercial no contractual   | Documento commerciale non vincolante  | Documento comercial não contratual   | Этот коммерческий документ не является юридически обязательным   |
|  | Pour toute information technique se référer à la notice correspondante                    | Für technische Informationen, siehe die entsprechenden Anweisungen                        | For any technical information, please refer to the corresponding instructions                   | Para cualquier información técnica, ver la noticia correspondiente               | Per tutte le informazioni tecniche fare riferimento al catalogo istruzioni                  | Para qualquer informação técnica complementar consultar as respectivas instruções      | Для получения технической информации, см. соответствующие инструкции   |

